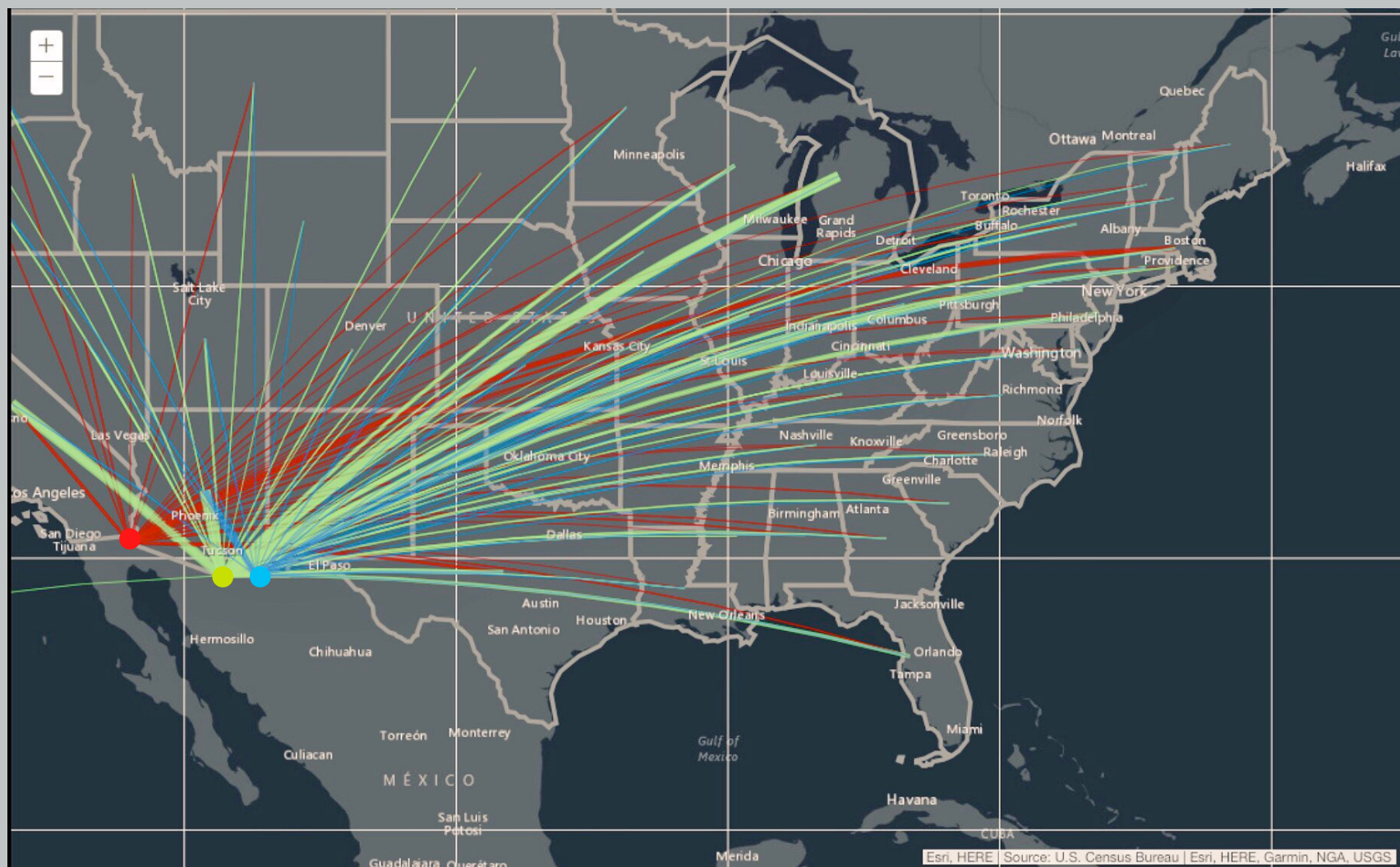




Border and Mexico Update

LEAGUE OF CITIES AND TOWNS

SEPTEMBER 1, 2021



Arizona Northbound Border Crossings

January-June 2020 vs January-June 2021

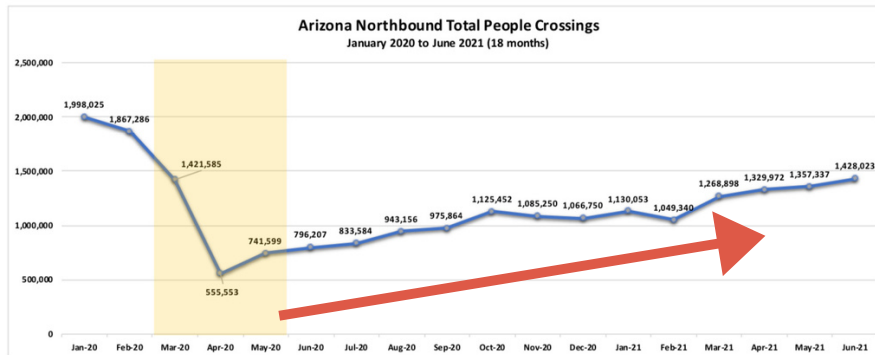
Port	Mode	Jan-Jun 2020	Jan-Jun 2021	Difference	Change
Douglas	Trucks	12,559	14,008	↑ 1,449	↑ 11.5%
	Personal Vehicles	536,148	524,302	↓ -11,846	↓ -2.2%
	Personal Vehicle Passengers	831,045	800,934	↓ -30,111	↓ -3.6%
	Pedestrians	300,321	255,033	↓ -45,288	↓ -15.1%
	Total People	1,133,569	1,056,050	↓ -77,519	↓ -6.8%
Nogales	Trucks	203,613	232,746	↑ 29,133	↑ 14.3%
	Personal Vehicles	1,136,927	1,104,995	↓ -31,932	↓ -2.8%
	Personal Vehicle Passengers	2,045,710	1,901,282	↓ -144,428	↓ -7.1%
	Pedestrians	881,454	863,790	↓ -17,664	↓ -2.0%
	Trains	314	331	↑ 17	↑ 5.4%
San Luis	Total People	2,978,296	2,835,667	↓ -142,629	↓ -4.8%
	Trucks	22,008	26,463	↑ 4,455	↑ 20.2%
	Personal Vehicles	1,090,716	1,331,860	↑ 241,144	↑ 22.1%
	Personal Vehicle Passengers	1,709,911	2,116,835	↑ 406,924	↑ 23.8%
	Pedestrians	1,081,485	891,688	↓ -189,797	↓ -17.5%
Lukeville	Total People	2,791,422	3,008,526	↑ 217,104	↑ 7.8%
	Trucks	184	233	↑ 49	↑ 26.6%
	Personal Vehicles	110,458	204,346	↑ 93,888	↑ 85.0%
	Personal Vehicle Passengers	230,094	418,176	↑ 188,082	↑ 81.7%
	Pedestrians	14,321	7,387	↓ -6,934	↓ -48.4%
Naco	Total People	246,244	427,065	↑ 180,821	↑ 73.4%
	Trucks	1,613	2,184	↑ 571	↑ 35.4%
	Personal Vehicles	111,169	120,596	↑ 9,427	↑ 8.5%
	Personal Vehicle Passengers	180,772	181,348	↑ 576	↑ 0.3%
	Pedestrians	30,643	27,763	↓ -2,880	↓ -9.4%
Sasabe	Total People	211,466	209,111	↓ -2,355	↓ -1.1%
	Personal Vehicles	10,406	14,859	↑ 4,453	↑ 42.8%
	Personal Vehicle Passengers	19,022	24,848	↑ 5,826	↑ 30.6%
	Pedestrians	236	181	↓ -55	↓ -23.3%
	Total People	19,258	27,204	↑ 7,946	↑ 41.3%

Port	Mode	Jan-Jun 2020	Jan-Jun 2021	Difference	Change
State Totals	Trucks	239,977	275,634	↑ 35,657	↑ 14.9%
	Personal Vehicles	2,995,824	3,300,958	↑ 305,134	↑ 10.2%
	Personal Vehicle Passengers	5,016,554	5,443,423	↑ 426,869	↑ 8.5%
	Pedestrians	2,308,460	2,045,842	↓ -262,618	↓ -11.4%
	Total People	7,380,255	7,563,623	↑ 183,368	↑ 2.5%

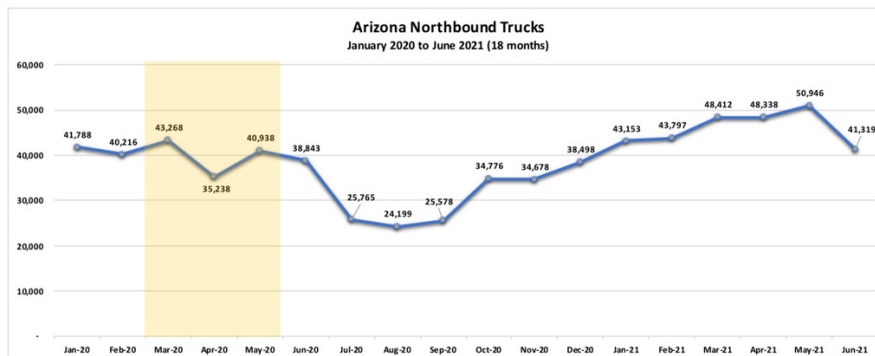
Source: US Department of Transportation, Bureau of Transportation Statistics.

First Half of 2021:

- Trucks are on track to set a new record
- Border Crossing restrictions impact non-essential travel
 - Restrictions continue through September, 2021
- Cars and People making a moderate comeback



- Upward trend in total people but not back to pre-COVID levels



- Trucks showing strong growth

- Dip in June due to seasonal changes

Source: US Department of Transportation, Bureau of Transportation Statistics.
All data provided herein subject to change without prior notice.

Border Crossing Trends

USMCA & North American Supply Chains Back at Work



Arizona Trade with Mexico and Canada

January-June 2020 vs January-June 2021

AZ Exports to Mexico Jan-Jun 2020 vs Jan-Jun 2021			
2020	2021	Difference	Change
3,410,081,465	4,295,006,687	\$884,925,222	↑ 26.0%

AZ Exports to Canada Jan-Jun 2020 vs Jan-Jun 2021			
2020	2021	Difference	Change
1,055,853,559	1,195,854,456	\$140,000,897	↑ 13.3%

Total AZ Exports to Mexico and Canada Jan-Jun 2020 vs Jan-Jun 2021			
2020	2021	Difference	Change
\$4,465,935,024	\$5,490,861,143	\$1,024,926,119	↑ 22.9%

AZ Imports from Mexico Jan-Jun 2020 vs Jan-Jun 2021			
2020	2021	Difference	Change
4,742,937,717	5,179,179,097	\$436,241,380	↑ 9.2%

AZ Imports from Canada Jan-Jun 2020 vs Jan-Jun 2021			
2020	2021	Difference	Change
1,085,228,244	1,172,292,282	\$87,064,038	↑ 8.0%

Total AZ Imports from Mexico and Canada Jan-Jun 2020 vs Jan-Jun 2021			
2020	2021	Difference	Change
\$5,828,165,961	\$6,351,471,379	\$523,305,418	↑ 9.0%

AZ Total Trade with Mexico Jan-Jun 2020 vs Jan-Jun 2021			
2020	2021	Difference	Change
\$8,153,019,182	\$9,474,185,784	\$1,321,166,602	↑ 16.2%

AZ Total Trade with Canada Jan-Jun 2020 vs Jan-Jun 2021			
2020	2021	Difference	Change
\$2,141,081,803	\$2,368,146,738	\$227,064,935	↑ 10.6%

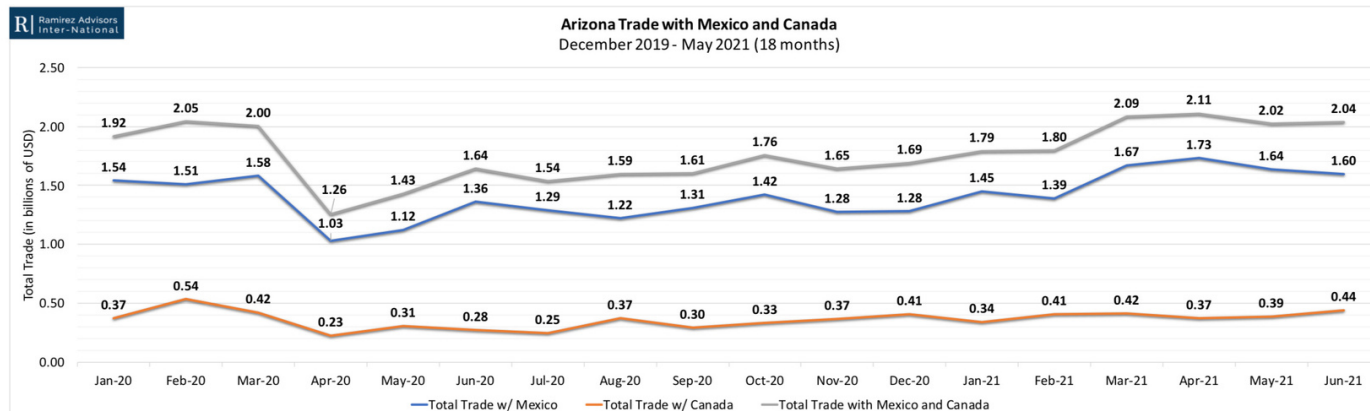
Total Arizona Trade with Mexico and Canada Jan-Jun 2020 vs Jan-Jun 2021			
2020	2021	Difference	Change
\$10,294,100,985	\$11,842,332,522	\$1,548,231,537	↑ 15.0%

Source: US Census Bureau.
Values represented in \$USD.
All data subject to change without prior notice.
Updated: 08/06/2021

**Trade with Mexico:
Up 16.2%**

**Trade with Canada:
Up 10.8%**

**Trade with USMCA
Partners:
Up 15%**



Douglas Two-Port Solution



Raul H. Castro Port of Entry



Conceptual Design for Douglas commercial port of entry

Douglas Two-Port Solution -

- Asking for ~\$325 million for Two-Port Solution
- GSA Conducted Feasibility Study and sent Diplomatic note to Mexico in February, 2020
- City of Douglas donating 80 acres of land
- Mexican land owner working on donation of land and easement
- Asking for Mexico's response to Diplomatic Note



DeConcini Port of Entry



DeConcini Flooded After Monsoon Storm

DeConcini Modernization

DeConcini Modernization-

- GSA and CBP have confirmed that port is beyond its functional and operational life
- many issues, from congestion to flooding during monsoons, to stormwater tunnels under port, and much more
- Asking for GSA to conduct Feasibility Study to determine conceptual design, footprint and estimated cost
- Seeking consensus from Mexico on this project

San Luis I Port of Entry



San Luis I Port of Entry



Conceptual Design for San Luis I Binational Traffic Flow

San Luis 1 Modernization-

- Funded in FY 2020 \$152.4 million
- Asking for ~\$90 million for full build out of the San Luis I Modernization project
- Need Mexico to commit to funding improvements on Mexican side
- Rerouting southbound traffic to a new location
- Working with NADBank on \$75,000 TAG for traffic flow analysis and initial design

Port of Entry Projects

EDW21A09 WG9

S.L.C.

2543

1 2018, and to section 251(b) of the Balanced Budget and
2 Emergency Deficit Control Act of 1985.

3 GENERAL SERVICES ADMINISTRATION

4 REAL PROPERTY ACTIVITIES

5 FEDERAL BUILDINGS FUND

7 For an additional amount to be deposited in the
8 "Federal Buildings Fund", \$3,418,008,000, to remain
9 available until expended, for construction and acquisition,
10 and repairs and alterations of border stations and land
11 ports of entry, of which no more than \$250,000,000 shall
12 be for Program Contingency and Operational Support for
13 necessary expenses for projects funded under this heading,
14 including, moving governmental agencies (including space
15 alterations and adjustments, and telecommunications relo-
16 cation expenses) in connection with the assignment, alloca-
17 tion and transfer of space, leasing of temporary space, and
18 building operations, of which

19 (1) \$2,527,808,000 shall be for projects on the
20 U.S. Customs and Border Protection five-year plan;
21 (2) \$100,200,000 shall be for projects with
22 completed U.S. Customs and Border Protection/Gen-
23 eral Services Administration feasibility studies as
24 prioritized in the "American Jobs Plan Project List"

Infrastructure Investment and Jobs Act

- Includes \$3.4 billion to pay for port of entry projects
- Funds entire CBP 5-Year Plan for Capital Improvements Projects (CIP)
- Includes:
 - \$147 million for San Luis I Full Build Out
 - \$457 million for Douglas Two-Port Solution:
 - \$237million for new port of entry
 - \$220 million for Raul H. Castro Port of entry
- By funding entire CIP, allows for Nogales DeConcini to move up!

Luis Ramirez Thomas, MSFS
Ramirez Advisors Inter-National, LLC
ramirezadvisors.com